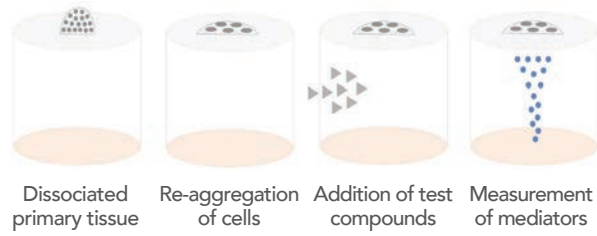


**Innovative Technology
ORGANDOT 3D culture**



**Cell-based Assays and
Cell Isolation**

Our PHASEZERO scientists use their expertise in primary cell isolation and development of fit-for-purpose 2D and 3D models to provide functional assays and molecular / genomic approaches to study therapeutic effect, disposition and safety. We have experience with a broad portfolio of culture platforms across multiple cell types and disease areas. In particular, we apply our proprietary ORGANDOT™ culture to study diabetes, liver fibrosis and oncology

**Reach out to our team
today to start your next project.**

About BioIVT

BioIVT, formerly BioreclamationIVT, is a leading global provider of high-quality biological specimens and value-added services. We specialize in control and disease state samples including human and animal tissues, cell products, blood and other biofluids. Our unmatched portfolio of clinical specimens directly supports precision medicine research and the effort to improve patient outcomes by coupling comprehensive clinical data with donor samples. Our PHASEZERO® Research Services team works collaboratively with clients to provide target and biomarker validation, phenotypic assays to characterize novel therapeutics, clinical assay development and *in vitro* hepatic modeling solutions. As the world's premier supplier of ADME-Tox model systems, including hepatocytes and subcellular fractions, BioIVT enables scientists to better understand the pharmacokinetics and drug metabolism of newly discovered compounds and the effects on disease processes. By combining our technical expertise, exceptional customer service, and unparalleled access to biological specimens, BioIVT serves the research community as a trusted partner in ELEVATING SCIENCE.



For Inquiries:
North America & Asia Pacific
T +1 516 483 1196 F +1 516 483 4683
E customerservice@bioivt.com

Europe, Middle East & Africa
T +44 (0) 1444 250010 F +44 (0) 1444 250066
E cseurope@bioivt.com

BioIVT.com

Our UK PHASEZERO® facility is licensed by the UK Human Tissue Authority and accredited by the UK Good Laboratory Practice (GLP) Monitoring Authority. Since 2015 this facility operates Good Clinical Laboratory Practice (GCLP) to support analysis of human biosamples from clinical trial subjects.



Answers for All Your Liver-Related Research Questions

HEPATIC MODELS THAT ENABLE RESEARCHERS TO BETTER PREDICT NEW DRUG CANDIDATES' IMPACT ON THE LIVER

We take a collaborative approach to designing and implementing *in vitro* hepatic research programs. Your project will be assigned to an experienced team that will design, implement, and interpret the study results. We provide consulting support to ensure that study results can be used for regulatory submissions and meet the needs of your internal and external stakeholders. We view our clients as partners and have structured our processes to be flexible and adaptable to meet changing project requirements, and at the same time ensure that we provide high-quality deliverables.

Innovative Technology



The C-DILI Assay is a novel *in vitro* method to evaluate a compound's potential for cholestatic drug-induced liver injury.

B-CLEAR Technology

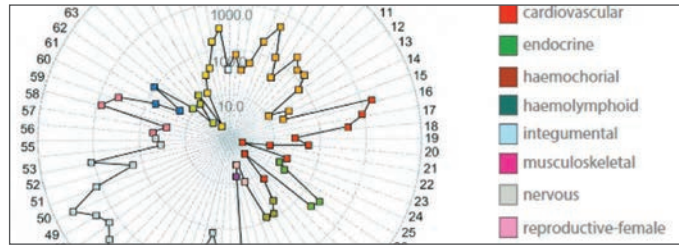
B-CLEAR® Technology is a patented methodology that allows quantitation of biliary clearance in an *in vitro* model which correlates to *in vivo* biliary clearance.



- 1 Consulting / Custom Research**
 - Design comprehensive *in vitro* hepatic programs
 - Collaborate on novel experimental designs
- 2 Hepatotoxicity**
 - Cytotoxicity assessment & evaluate Cholestatic hepatotoxicity risk
 - Determine mechanisms of toxicity
- 3 ADME DDI**
 - CYP Induction & inhibition
 - Screening & regulatory submission packages
- 4 Metabolism**
 - Reaction phenotyping
 - Metabolic stability
- 5 Hepatic Clearance**
 - Quantitate biliary clearance
 - Disposition & interactions
- 6 Multi-organ Models**
 - Model compound pathways
 - Gut, skin, lung to liver
- 7 Liver Disease**
 - Mechanism of action
 - Gene regulation

**Your Partner in
ELEVATING SCIENCE**

Expertise in Experimental Design, Execution, Data Interpretation and Reporting

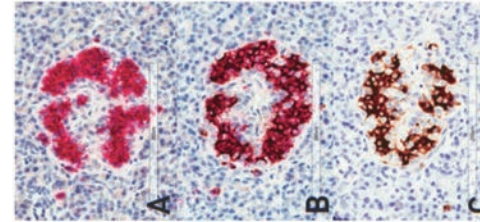


Gene Expression Profiling

PHASEZERO® Research Services provide target and biomarker validation support through the delivery of high-quality quantitative gene expression data. One example is our XPRESSWAY™ Profiles, which provide quantitative target expression data across 72 different non-diseased human tissue types, each from three different donors. The profiles provide a "snapshot" of where and to what extent a gene is expressed across the human body.

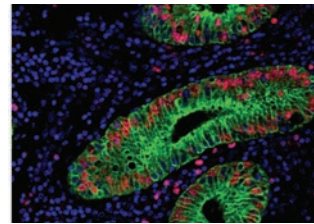
In situ Hybridization (ISH)

Our PHASEZERO scientists have established expertise in ViewRNA™ and RNAscope® branched chain ISH, with the ability to multiplex either two gene targets or one gene plus one protein target. Thorough assay development and optimization approaches allow us to effectively use these techniques to deliver high-quality, biologically relevant data supporting human tissue-based target and biomarker validation projects.



Immunohistochemistry (IHC)

Our scientists and pathologists are highly regarded for their ability to analyze and interpret IHC data utilizing multiple platforms. A wide range of analysis and reporting formats are available, from simply generating data for analysis by our clients to comprehensive semi- or fully quantitative digital image analysis with publication quality reports. They apply rigorous scientific approaches to deliver intelligent assay design, robust antibody validation and assay optimization, reproducible assay methodology and expert data interpretation. We support research, GLP and GCLP studies.

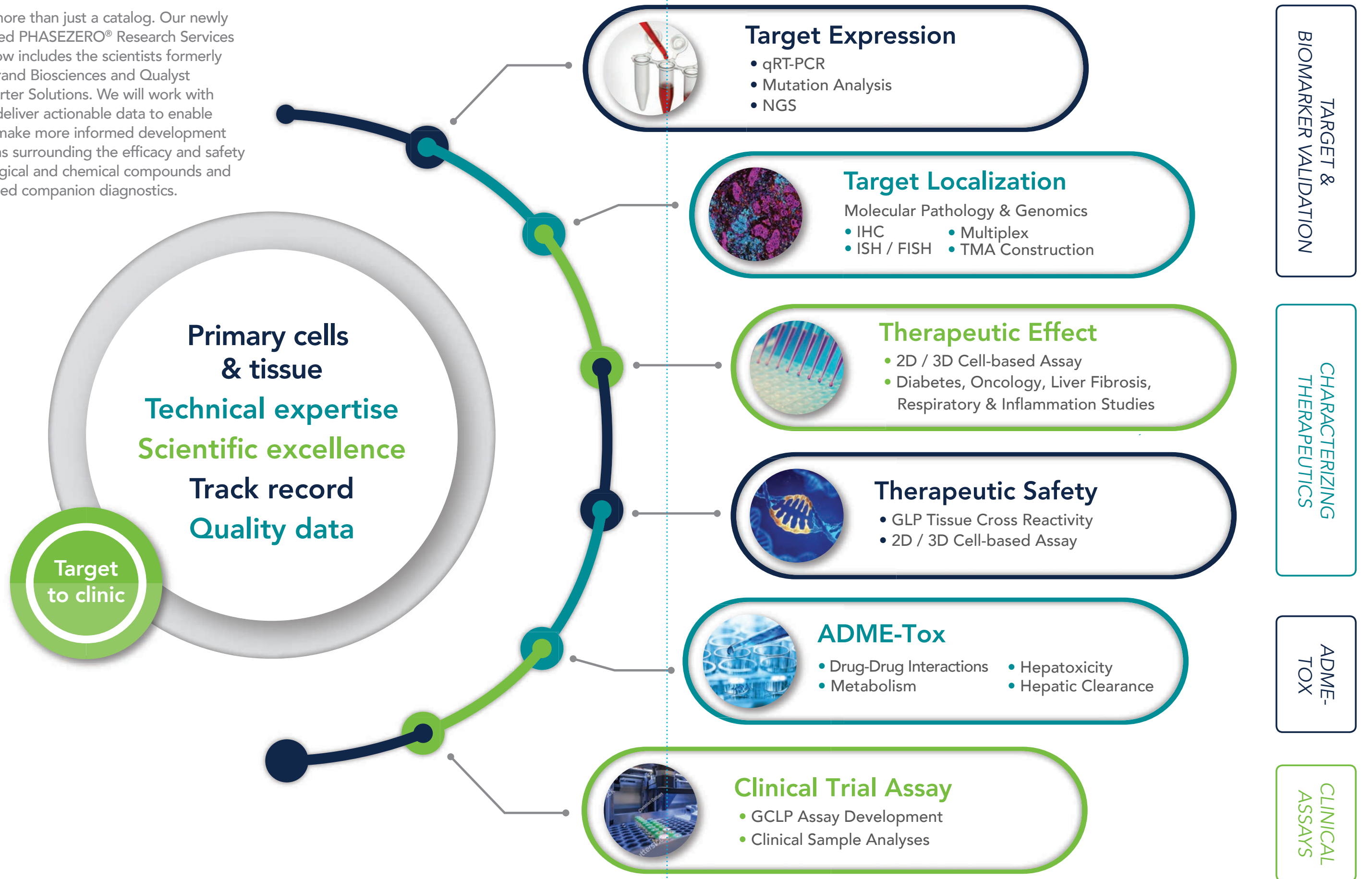


PHASEZERO Research Services provide in-depth immunohistochemistry (IHC), with custom assay development for:

- Commercially available antibodies
- Client-generated antibodies
- Biosimilars
- Bi-specifics
- Antibody-drug conjugates (ADCs)

Value-added Research Services

We're more than just a catalog. Our newly expanded PHASEZERO® Research Services team now includes the scientists formerly of Asterand Biosciences and Qualyst Transporter Solutions. We will work with you to deliver actionable data to enable you to make more informed development decisions surrounding the efficacy and safety of biological and chemical compounds and associated companion diagnostics.



Comprehensive portfolio of research services supporting target to clinic



Consultative, tailored scientific approach



Passionate about ethics, quality, continuity and data integrity



Years of expertise as a professional and trusted scientific partner